

Sanat | Yapı

سانات يابي

Floor 3, Bldg 2829
King Abdullah Br Rd, Al Wurud Dist. Riyadh 12253
KINGDOM of SAUDI ARABIA

Ataşehir Bulvarı, Gülibrişim Caddesi
Evinpark Rezidans, B1/1-2 34758
Ataşehir / İstanbul / TÜRKİYE

Abdullah Cem Baysal General
Manager
cem.baysal@sanatyapi.com.sa
+966 53 410 73 2
+966 11 494 14 09

*We Bring Art to
Structures and Aesthetic to Life.*

SANAT YAPI

2001 - 2025



SANAT YAPI

ABOUT US

Our Firm has managed to compound cost, duration and quality components always in the most optimal way possible, since its foundation, pursuant to our health-security-environment policy and has always conserved the belief of submitting these three main criterions together is the secret of succes. Rework desire and trust of the firms we worked together until today is our biggest source of pride as **SANAT YAPI**.

On the purpose of prioritizing the satisfaction of the employer's, our primary focus is to serve investors in the perspective of contemporary technology and contributing the development of the constuction sector by enabling to use these inovations and developments simultaneously.

Our principles wich constitutes Sanat Yapi's fundemental quality policy;

- To increase our staff's individual contribution through continuing training.
- To ensure our customers' satisfaction through our service quality, technical support and other services.
- To work with the principle of doing our job correctly, on time and with our devotedness to providing high-quality services.
- To provide everyone's participation to our continuous development with our highly motivated and determined staff.
- To enhance all the processes which affects our company's success and services.

Backed by 23 years of experience, we build trusting and long-term cooperation with our clients through a strong, dedicated, and experienced team that focuses on strategic thinking and effective problem-solving. Our success stems from our knowledge and experience in different fields, allowing us to deliver fast, active, and productive solutions and ensure steady and consistent services.



“

*We Bring Art to
Structures and Aesthetic to Life.*





Blending Architecture with the Grace of Art





SANAT YAPI

OUR QUALITY POLICY

We believe that quality is a process that should be developed and maintained rather than a target.

We will continue our activities in full compliance with the ethical values and laws both at our workplace and the environments we

live in. In this context, we keep investing in the growth of our employees, working processes and equipments.

- To ensure customer satisfaction through our service quality, technical support and after-services
- To work under the principle of performing high-quality, timely and proper works at the time of first providing service
- To work with our suppliers and contractors in a mutual trust and cooperation and increase our productivity,
- To make everyone contribute to the continuous growth through motivation and our employees determined to succeed,
- To continuously improve the processes that affect the success and service quality of our company,
- To increase the individual contributions of our employees through continuous education,
- To improve the Quality Management System and comply with the requirements thereof,
- To comply with the relevant legislation and customer specifications,
- To become a leader corporation of the industry in terms of technology and quality with a sense of responsibility towards the environment and the society.



SANAT YAPI

OUR HSSE POLICY

Top priority of Sanat Yapi is to "prevent the incidents ensure security, take care of the people and the environment" in its activities. Sanat Yapi applies a comprehensive Health, Safety & Environment (HSE) policy at its offices, work areas and other relevant facilities in order to protect its employees and partners. Such policy involves protection against any kind of work-related contamination, hazard and incidents. Everyone at Sanat Yapi bears responsibility in the Health, Safety & Environment related matters and actively contribute to the implementation of such matters. We acknowledge and undertake to fulfill the following requirements in the light of our ever-growing HSE policy:

- To foresee the possible hazards towards human and environmental health and take the necessary precautions in advance, protect the health and ensure the security of the staff and the other people at work,
- To raise awareness about the protection of health and the environment among the staff including the customers, contractors and suppliers, to give the necessary trainings and provide the continuance thereof,
- To use the natural and energy resources in an economical and efficient way,
- To comply with the local and international legislation and standards during the activities,
- To make frequent inspections in order to increase the HSE performance and implement the relevant corrective and preventive measures in accordance with the data to be obtained as a result of the inspection,
- To prepare reports related to the incidents and accidents including the unsafe conditions, unsafe behaviors and near miss incidents in order to prevent them to recur and improve the performance, and make people to take a lesson from such incidents
- To attach importance to the product quality, high-quality and reliable materials and service selection in addition to an advanced engineering approach.

THE GOLDEN RULE: No work is so urgent and important worth ignoring the safety precautions and safe working conditions!



TABLE OF **WHAT WE DO**

BUSINESS BUILDINGS – OFFICES – SHOPPING MALLS - HOTELS

01

We have successfully completed many prestigious projects in different categories, with a strong focus on professionalism, and employing the latest proven concepts and technique

INDUSTRIAL PLANTS

02

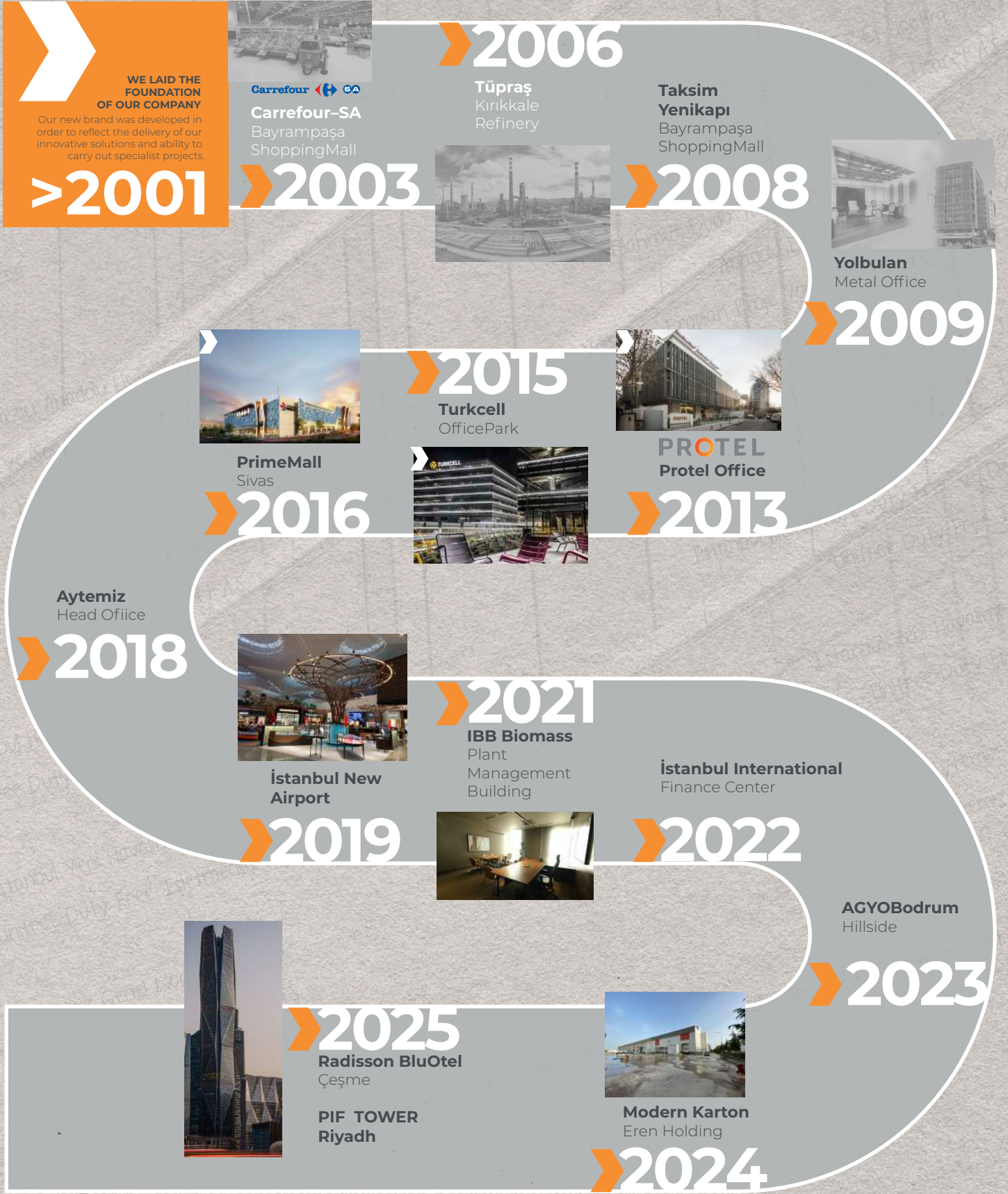
We offer the most professional approach to industrial plant construction, which requires expertise in both engineering and practice

GAS & SERVICE STATIONS

03

With our years of experience and knowledge, we have been providing turnkey projects that include gas & service stations. Some of our business partners in this field are: Opet, Shell, Bp, Total, Petrol Ofisi, Alpet, Aytemiz, Kadoil, Lukoil, GO and other leading gas companies





Sanat Yapı – Completed Landmark Projects Since 2001

Since 2001, Sanat Yapı has proudly delivered numerous large-scale and high-profile projects across Turkey. With its dedication to quality and precision, the company has contributed to key developments in education, industry, retail, infrastructure, and corporate sectors. Some of our completed projects include:

• FMV Işık Schools – Florya Campus • MIGET Meat Production Facility – Migros • Mahmut-Dudu Yazıcı Anatolian High School – AEV Foundation • İstanbul • Waste Incineration and Energy Facility – for İstanbul Metropolitan Municipality • İstanbul Airport Duty-Free Areas and Warehouses – Unifree • İstanbul Airport Unifree Offices • Aytemiz Headquarters • Metropol Shopping Mall – İstanbul • Prime Mall – Sivas • Turkcell Headquarters

Sanat Yapı continues to shape the future by building sustainable and functional spaces for generations to come.



SANAT YAPI

FULL SPECTRUM SUSTAINABILITY

OUR APPROACH

Economical

Plan for long-term profitability first, while incorporating short-term trends as they occur. Reduce future expenditures and running costs through early planning and investment. Build future-proofing into the project's long-term plan from the outset.

Balance of inclusiveness vs. exclusivity.

Design flexible programs and buildings to allow change with the times.

Ethical

Offer services that appeal to people's hopes and desires, not just their pocket books. Encourage human to human contact - promote interaction. Design to encourage a lively, meaningful street life that people can recognize as their own. Provide diverse services and offerings for diverse customers. Improve the local community by providing services beyond the new city and the gated community. Demonstrate sensitivity to traditions and local values. Create a sense of 'belonging' in the space, through both physical environment and activities offered.

Ecological

-Use natural resources to the best advantage and efficiency.

-Improve customer experience by designing for positive contact with natural elements.

-Engage with regional developments in sustainability, such as renewable energy and carbon markets.

-Set market trend by incorporating the value of nature into the project concept and communication.

-Build for longevity, while considering local climate conditions.

-Respect the carrying capacity of the surrounding environment

-Consider sustainability not just according to the final product, but the energies required to obtain the product: embedded energy.



Economical



Ethical



Ecological



As a practice we establish the performance of sustainable actions on three basic foundations during all of our thinking processes. These we have come to define as the principles of the 3 E's in which almost all of the remaining layers exist that focus us towards achieving a sustainable result. That is: Ethics, Ecology and Economics.



“Strong Team, Expert Crew”





GENERAL MANAGER

**SALTUK ORKUN
ERİBOL**
Civil Engineer

*Founder and Chairman of the
Board of Directors of SANAT YAPI*



SANAT YAPI

*"We Bring Art to
Structures and Aesthetic to Life."*



DEPUTY GENERAL MANAGER

CEM BALAM
Civil Engineer



ADVISOR

*DOÇ.DR.
SADIK ÖZTOPRAK
CIVIL ENGINEER*



**GEN. COORD.
QUALITY MNG**

GÜRKAN GÜR



**CONTRACTING
GROUP COORD.**

İLHAMİ E. DAŞKIN
ARCHITECT



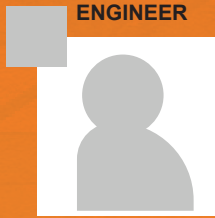
**PROJECT
COORDINATOR**

MEHMET BOZOK
CIVIL ENGINEER



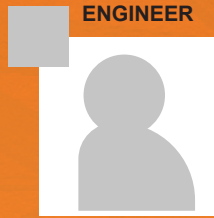
**MEP GROUP
COORDINATOR**

AYHAN YALÇI
ELECTRICAL ENGINEER



**MEP GROUP
ENGINEER**

AYSAN ILGAZ
MECH. ENGINEER



**MEP GROUP
ENGINEER**

CAN YÜKSEL
MECH. ENGINEER



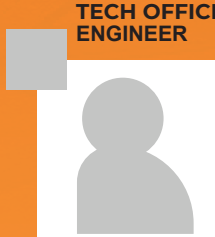
**MEP GROUP
TECHNICIAN**

SULTAN ERCAN
ELECTRICAL TECHNICIAN



**TECH OFFICE
COORDINATOR**

**ENES BEHİÇ
ERDOĞAN**
CIVIL ENGINEER



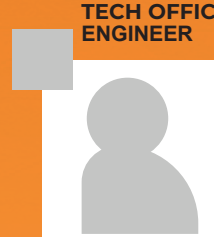
**TECH OFFICE
ENGINEER**

**HAMED RASHID
SARAND**
MASTER CIVIL ENGINEER



**TECH OFFICE
ARCHITECT**

FATMA SARIOĞLAN
ARCHITECT



**TECH OFFICE
ENGINEER**

YASEMİN YILDIRIM
CIVIL ENGINEER



**TECH OFFICE
ARCHITECT**

YASEMİN HAZAR
ARCHITECT

TECHNIC OFFICE



HATİCE ARGİN
ARCHITECT

CIVIL GROUP



MEHMET
YAKUP ORUÇ
ARCHITECT

CIVIL GROUP



SUPHİ ŞAHİN

CIVIL GROUP



ERGÜN
GÜNDOĞDU

ACCOUNT MANAGER



NERMİN ERGÜN

FINANCE MANAGER



SERKAN ÇELİKKOL

FINANCE EXPERT



HASAN YILMAZ

ACCOUNTING SPECIALIST



AYŞİN EŞENLİK

ACCOUNTING SPECIALIST



OZAN SAATÇI

LEGAL ADVISOR



YEŞİM ERİBOL

BUDGET CONTROL



MESUT AKSOY
CIVIL ENGINEER

PROJECT AND PLANNING



ÖMER NACİ KOÇ
PROGRESS
PAYMENT CHIEF

PROJECT AND PLANNING



SERDAR SARI
CIVIL ENGINEER

PROCUREMENT



MÜKREMİN ÜSTÜN
CIVIL ENGINEER

CIVIL GROUP



SERKAN ÜNAL
PROJECT
MANAGER

CIVIL GROUP



TÜMER PEHLİVAN
PROJECT
MANAGER

CIVIL GROUP



BEYCAN
ÇUHADAR
CONSTRUCTION
MANAGER

CIVIL GROUP



EVREN
SARIOĞLU
CONSTRUCTION
MANAGER

CIVIL GROUP



TOLGA
ALTINOĞLU
TECHNICAL
OFFICE



KSA ORGANIZATION
General Manager

Abdullah Cem
BAYSAL
Civil Engineer



SANAT YAPI

*"We Bring Art to
Structures and Aesthetic to Life."*

**PROJECT
MANAGER**



Koray KUŞCU

DC.CHIEF



Nitesh
PARAMESWARAN

**CHIEF PROJECT
CONTROL**



BİROL
KELLECI

**SENIOR
ACCOUNTANT**



Mohammad
AL-SHARQAWI

**DESIGN
COORDINATOR**



Tarik
KURT

**CONSTRUCTION
MANAGER**



Basel Nazer
ALISMAEL

**QA/QC
MANAGER**



MD Sarwar
KHAN

**HSE
MANAGER**



Ahammed MD
Rafik HOSSAIN

**MEP
MANAGER**



Ayad Fayz Al
MUSTAFA

**ELECTRICAL
ENGINEER**



Mukhtar Osman Mukhtar
ELHASSAN

**LOW CURRENT
SUPERVISOR**



Mohammad Mostafa
AL-MOSTAFA

**WORKSHOP
IN-CHARGE**



Zakariya Abdulrahman
KHAYRU

**HR
MANAGER**



Mona
ALJOHNI

**HR
SPECIALIST**



Idris Sheikh
Ahmed ADAM

**ADMIN
SUPERVISOR**



Adem
AKYILDIZ

**IT
OFFICER**



Ali Abdulrahman
Thabet ALSHAHRANI



SANAT YAPI

ONGOING PROJECTS



ONGOING PROJECTS

PIF Tower



KAFD

مركز الملك عبدالله المالي

King Abdullah Financial
District (KAFD)

Sanat | Yapi

سانات يابي

Location : King Abdullah Financial
District (KAFD)

Type : Commercial Building

Works done : DLP Services & FAS
Integration & Trouble
Shooting Works

Duration : 6 months

Completed : Ongoing

ONGOING PROJECTS

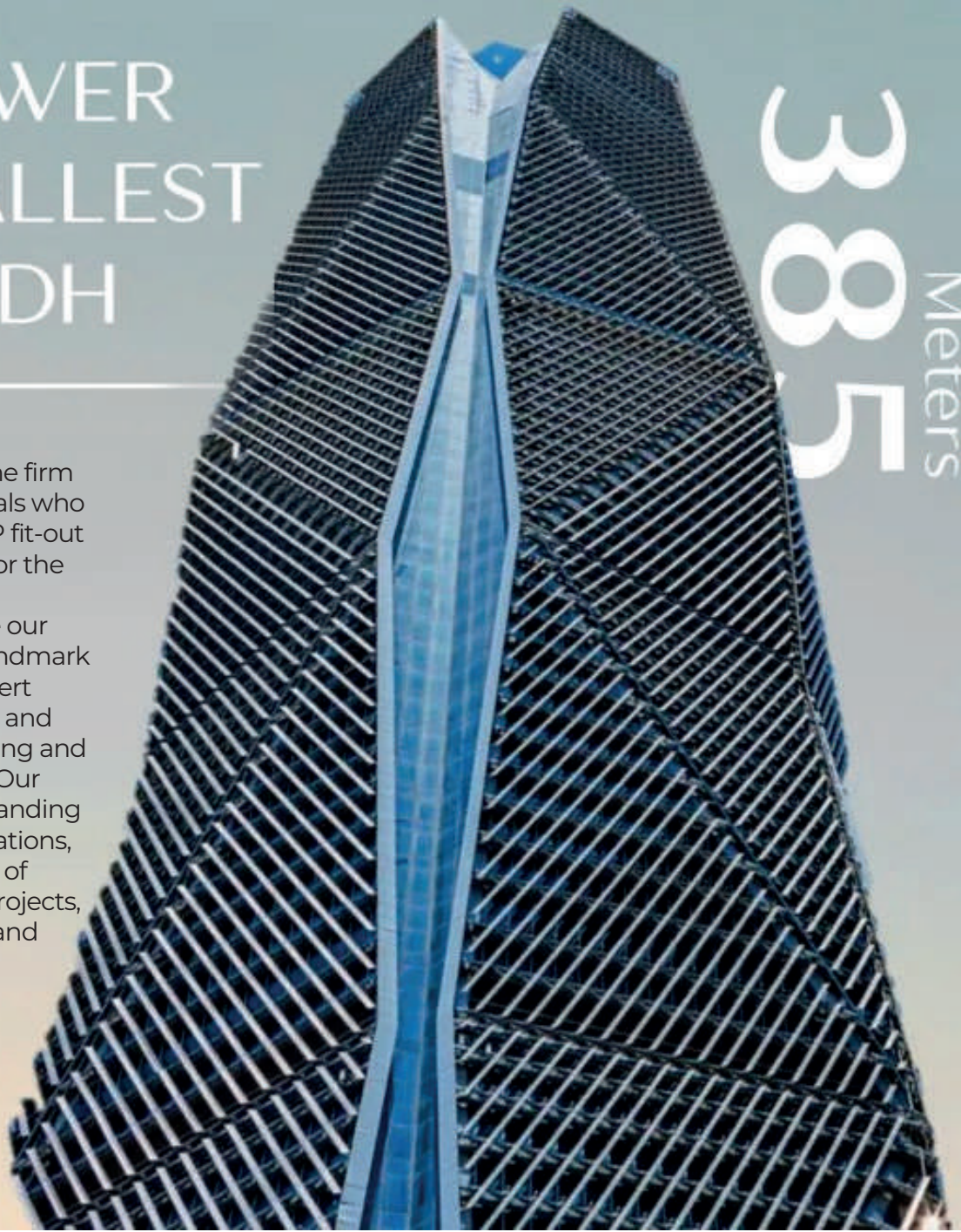


PIF TOWER THE TALLEST IN RIYADH

385
Meters

The engineers and management leading the firm are the same professionals who executed the Civil & MEP fit-out as the main contractor for the PIF Tower 27 floors.

We're proud to continue our involvement with this landmark project by providing expert Defects Liability Services and completing all outstanding and Troubleshooting works. Our comprehensive understanding of the building's specifications, coupled with our history of delivering on complex projects, guarantees meticulous and efficient results.



ONGOING PROJECTS



ONGOING PROJECTS

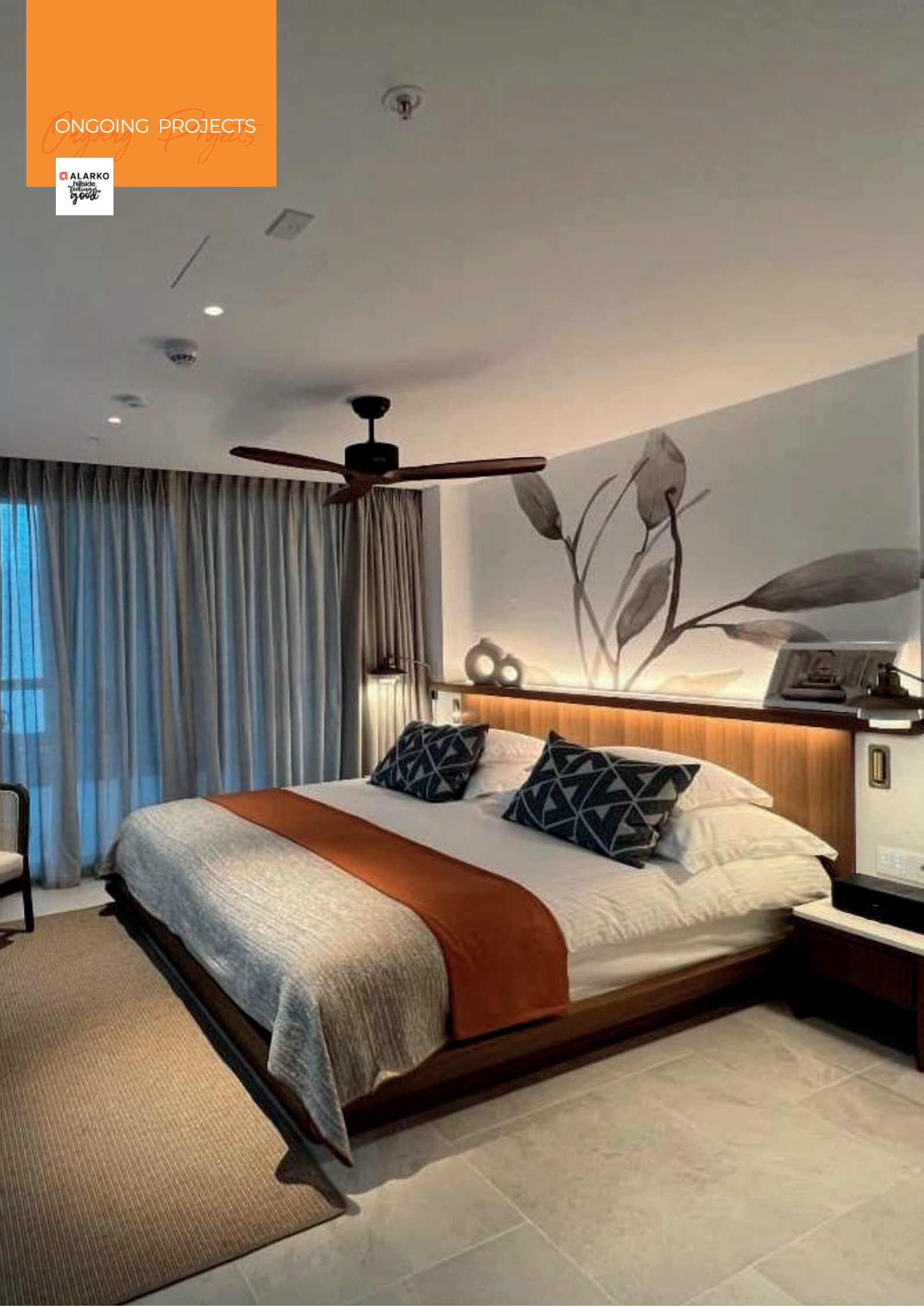


Sanat | Yapı

سانات يابي

Location : Bodrum
Type : Hotel
Works done : Construction works
Area : 70.000 Sq meters
Total accommodation capacity of 1.400 beds.
Duration : 16 months
Completed : Ongoing

ONGOING PROJECTS



ONGOING PROJECTS



Location : Afyonkarahisar
Type : Storage + Office
Works done : Construction works
Area : 30.000 Sq meters.
Duration : 9 months
Completed : Ongoing

ONGOING PROJECTS

BIM



ONGOING PROJECTS

Radisson BLU

Sanat | Yapı

ساعات يابي

Location : Çeşme /İzmir
Type : Hotel
Works done : Construction works
Area : 15.000 Sq meters.
Duration : 6 months
Completed : Ongoing

ONGOING PROJECTS



ONGOING PROJECTS

modern
KARTON



Location :Zonguldak
Type : Office
Works done : Construction works
Area : 5.000 Sq meters.
Duration : 6 months
Completed : Ongoing

ONGOING PROJECTS

modern
KARTON



ONGOING PROJECTS

VEM İLAÇ BÜYÜK KARISTIRAN PHARMACEUTICAL PRODUCTION FACILITY AND STORAGE UNIT



Location :Büyükkarıştiran / KIRKLARELİ
Type : Storage + Industrial Plant
Works done : Construction works
Area : 100.000 Sq meters.
Duration : 9 months
Completed : Ongoing

ONGOING PROJECTS



SANAT YAPI

ONGOING PROJECTS

| PROJECT NAME | CLIENT INVESTOR | CONTRACT VALUE | PROJECT TYPE |
|--|---|---------------------|---|
| Istanbul International Financial Center Ziraat Towers Tower-1 43rd-44th-45th Floor Executive Floors Architectural, Mechanical and Electrical Works | ZİRAAT GAYRİMENKUL YATIRIM ORT. A.Ş. | 16.454.000 \$ + VAT | Architectural, Mechanical, and Electrical Works |
| Bodrum Hillside Hotel Project | ALARKO GYO. A.Ş. | 15.166.000 \$ + VAT | Construction Works, Reinforcement, Infrastructure and Other Miscellaneous Works Supply and Implementation |
| Istanbul Financial Center Ziraat Towers Landscaping Works | ZİRAAT GAYRİMENKUL YATIRIM ORT. A.Ş. | 13.359.000 \$ + VAT | Finishing Works, Structural and Soft Landscaping Works |
| Vem Pharmaceutical Buyukkaristiran O.S.B. Pharmaceutical Production Facility and Storage Unit Project | VEM İLAÇ SAN. VE TİC. A.Ş. | 3.356.000 \$ + VAT | Finishing Works and Decoration |
| PM6 Modern Karton PM Building Administrative Office Project | EREN ENERJİ | 3.888.000\$ + VAT | Rough Construction Works, Finishing Works, Electrical and Mechanical Works |
| Afyonkarahisar Fruit and Vegetable Distribution Center and Banana Ripening Facility Construction Work | BİMBİRLEŞİK MAĞAZALARI A.Ş. | 14.753.000 \$ + VAT | Rough Construction Works, Façade, Finishing Works, Electrical and Mechanical Works |
| Taksim Hospitality Inc. Cesme Hotel Renovation Work | TAKSİM OTELCİLİK A.Ş. (TÜRKİYE VAKIFLAR BANKASI) | 8.580.000 \$ + VAT | Finishing Works, Façade Works, Electrical and Mechanical Works |

***Reference List of our ongoing project experiences in Turkey



Please scan the QR code to follow our current ongoing projects.



SANAT YAPI COMPLETED PROJECTS

Completed Projects



COMPLETED PROJECTS



Ziraat Bankası

ISTANBUL INTERNATIONAL
FINANCE CENTER
T.C. ZIRAAT BANK
LANDSCAPING AND FINE
CONSTRUCTIONS



Location : İstanbul
Type : Bank Center
Works done : Hard-soft landscaping and fine constructions
Area : 30.000 Sq meters 3.500 employees of capacity
Duration : 12 months
Completed : Ongoing

COMPLETED PROJECTS



COMPLETED PROJECTS



Ziraat Bankası

ISTANBUL INTERNATIONAL
FINANCE CENTER
T.C. ZIRAAT BANK
EXECUTIVE FLOORS

Sanat | Yapı

سانات يابي

Location : İstanbul
Type : Bank Center - Office Building
Works done : Fine construction, Electrical and Mechanical
Area : 8.000 Sq meters
Duration : 12 months
Completed : Ongoing

COMPLETED PROJECTS



COMPLETED PROJECTS



UNIFREE
DUTY FREE

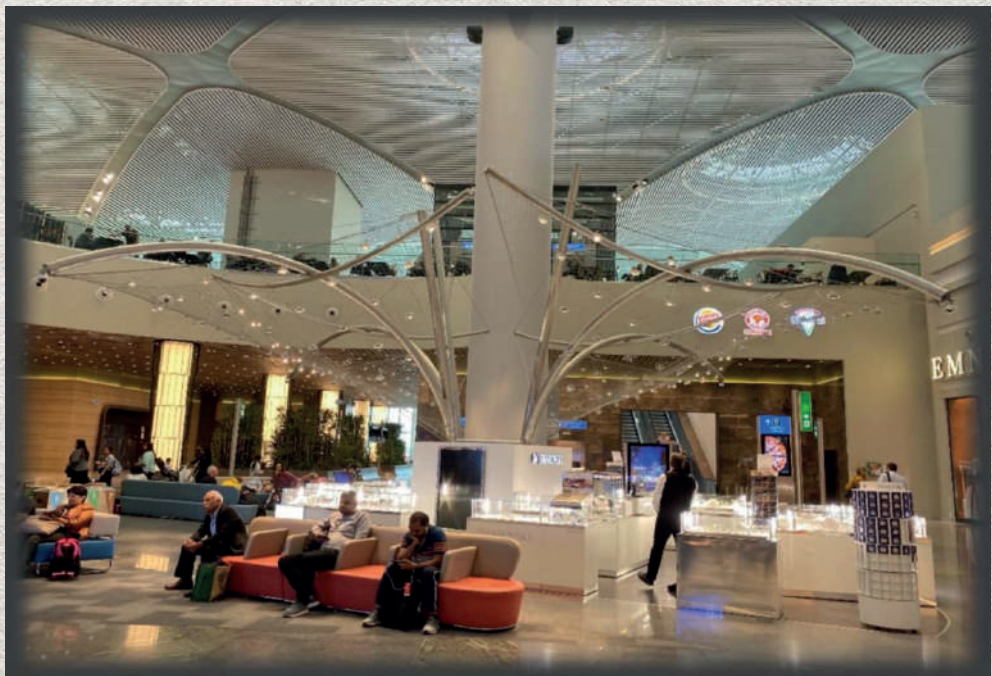
UNIFREE DUTY FREE
INTERNATIONAL
DEPARTURES

Sanat | Yapı

ساعات يابي

Location : İstanbul
Type : Artistic Monumental Units
Works done : Main and fine construction, Electrical and Mechanical
Area : 50.000 Sq meters
Duration : 5 months
Completed : 2018

ONGOING PROJECTS



COMPLETED PROJECTS



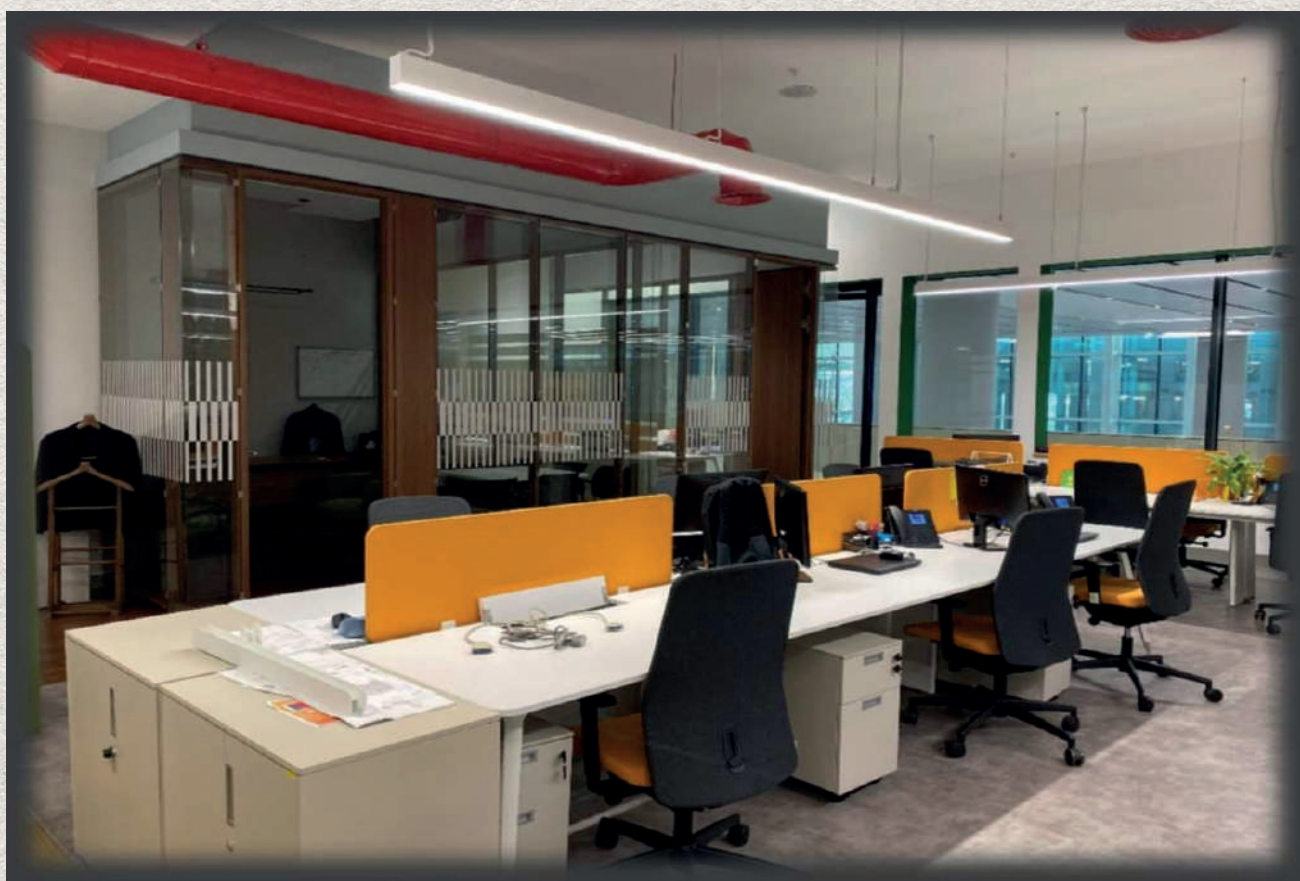
UNIFREE
DUTY FREE

UNIFREE HEAD
OFFICE PROJECT

Sanat | Yapı
سانات يابي

Location : İstanbul
Type : Office Building
Works done : Main and fine construction,
electrical and mechanical construction, decoration
Area : 9.000 Sq meters
Duration : 5 months
Completed : 2018

COMPLETED PROJECTS



COMPLETED PROJECTS



OFFICE PARK



Location : Çeşme /İzmir
Type : Office Building
Works done : Fine construction,
electrical and mechanical
construction
Area : 15.000 Sq meters
Duration : 5 months
Completed : 2015

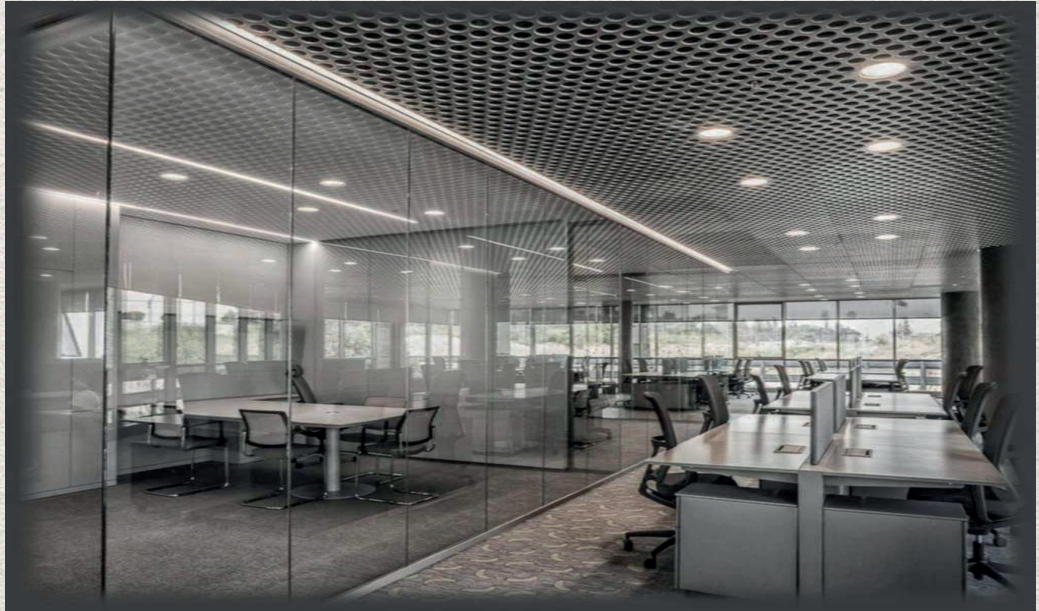
The 3-unit project's design is chosen by a nationwide architectural design competition and the main construction is completed by Rönesans Construction. The interior is designed by Tabanlıoğlu Architects and constructed by our company.

We played the role as a solution partner for our customer while the concept project was put into practice, thanks to our qualified and experienced team.

This project is completed in only 5 months, delivering the best customer experience. Turkcell Office Park is an A++ class office concept project, known with its cutting-edge technology and innovative architectural design.

COMPLETED PROJECTS

TURKCELL



COMPLETED PROJECTS



ISTANBUL MUNICIPALITY
BIOMASS POWER PLANT
MANAGEMENT BUILDING



Location : İstanbul
Type : Office Building
Works done : Fine construction and decoration works
Area : 5.000 Sq meters
Duration : 6 months
Completed : 2021

COMPLETED PROJECTS



COMPLETED PROJECTS



METROPOL
İSTANBUL

METROPOL ISTANBUL
SHOPPING MALL



Location : İstanbul
Type : Shopping Mall
Works done : Main and fine construction,
electrical, mechanical construction,
decoration
Area : 70.000 Sq meters
Duration : 7 months
Completed : 2019

COMPLETED PROJECTS



COMPLETED PROJECTS



PRIME MALL SHOPPING MALL



Location : Sivas
Type : Shopping Mall
Works done : Fine construction, Electrical and Mechanical
Area : 90.000 Sq meters
Duration : 6 months
Completed : 2016

COMPLETED PROJECTS



COMPLETED PROJECTS

PROTEL

PROTEL HEAD OFFICE



Location : Mecidiyeköy, İstanbul
Type : Office Building
Works done : Main and fine construction, electrical and mechanical construction, decoration
Area : 4.950 Sq meters
Duration : 10 months
Completed : 2014

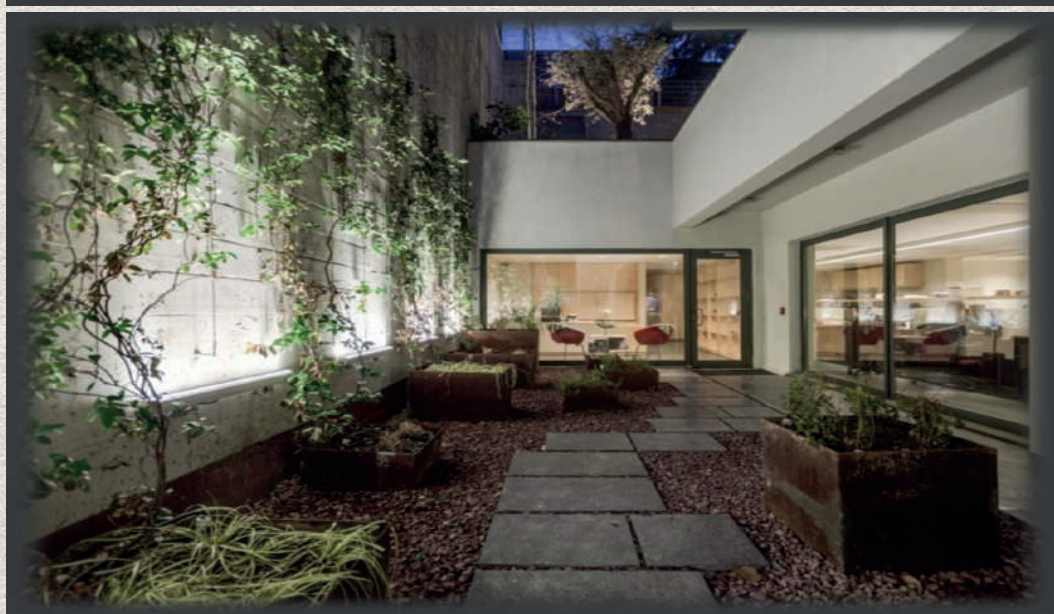
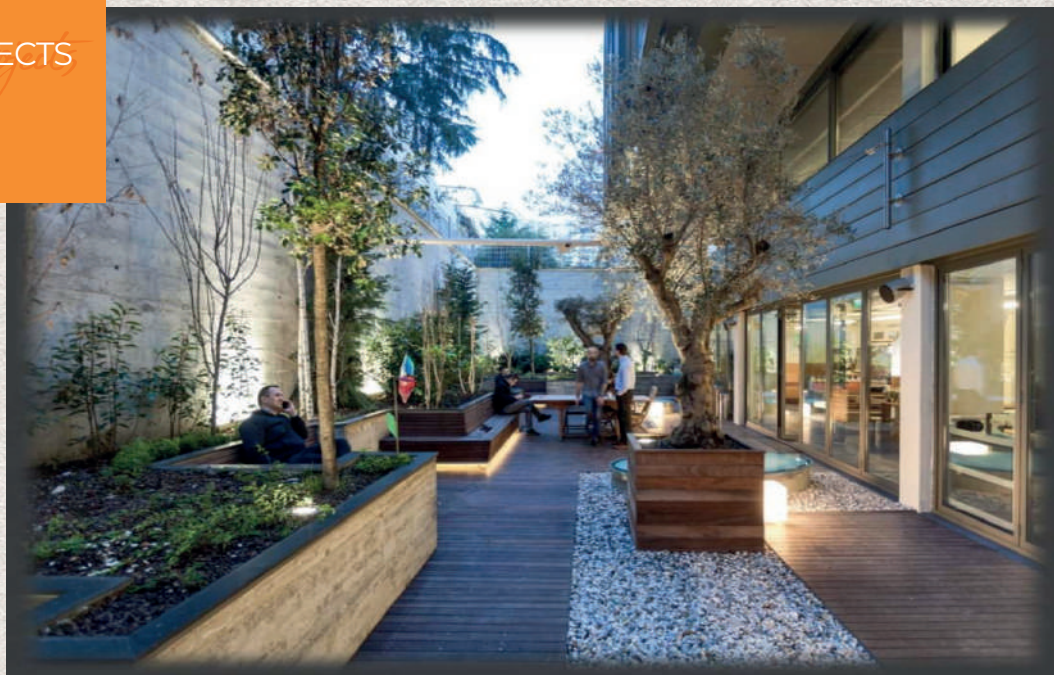
The building is constructed on a sloping land in Şişli/İstanbul. It consists of two separate units which have connected mezzanine floors and offices facing the atrium.

The building has rich architectural features not only with offices but also with shared spaces.

The glass roof above the atrium and the other skylight roof windows help to create a bright and spacious environment throughout the building. Protel is an A++ office complex, which also provides to increase employee's productivity with its courtyards and landscape design. The project has comprehensive architectural details.

COMPLETED PROJECTS

PROTEL



COMPLETED PROJECTS



YOLBULAN
METAL

YOLBULAN HEAD OFFICE



Location : Ataşehir, İstanbul
Type : Office Building
Works done : Main and fine construction, electrical and mechanical construction, decoration
Area : 6.000 Sq meters
Duration : 16 months
Completed : 2009

Yolbulan Office building has 6.000 Sq meters of gross floor area and it consists of 7 floors and 3 basements.

The project which has intelligent building infrastructure ensures the best employee comfort with its' high-tech features. The facade is designed with environmentally friendly technologies and has aluminium sunshade panels.

There is a 39-car capacity parking garage in the project..

Yolbulan is an A++ class office concept project, known with its cutting-edge technology and innovative architectural design.

COMPLETED PROJECTS



COMPLETED PROJECTS



AYTEMİZ HEAD OFFICE BUILDING

Sanat | Yapı

سانات يابي

Location : Çeşme /İzmir
Type : Hotel
Works done : Construction works
Area : 15.000 Sq meters.
Duration : 6 months
Completed : Ongoing

COMPLETED PROJECTS

Aytemiz



COMPLETED PROJECTS

intercity

INTERCITY PIAZZA OFFICE

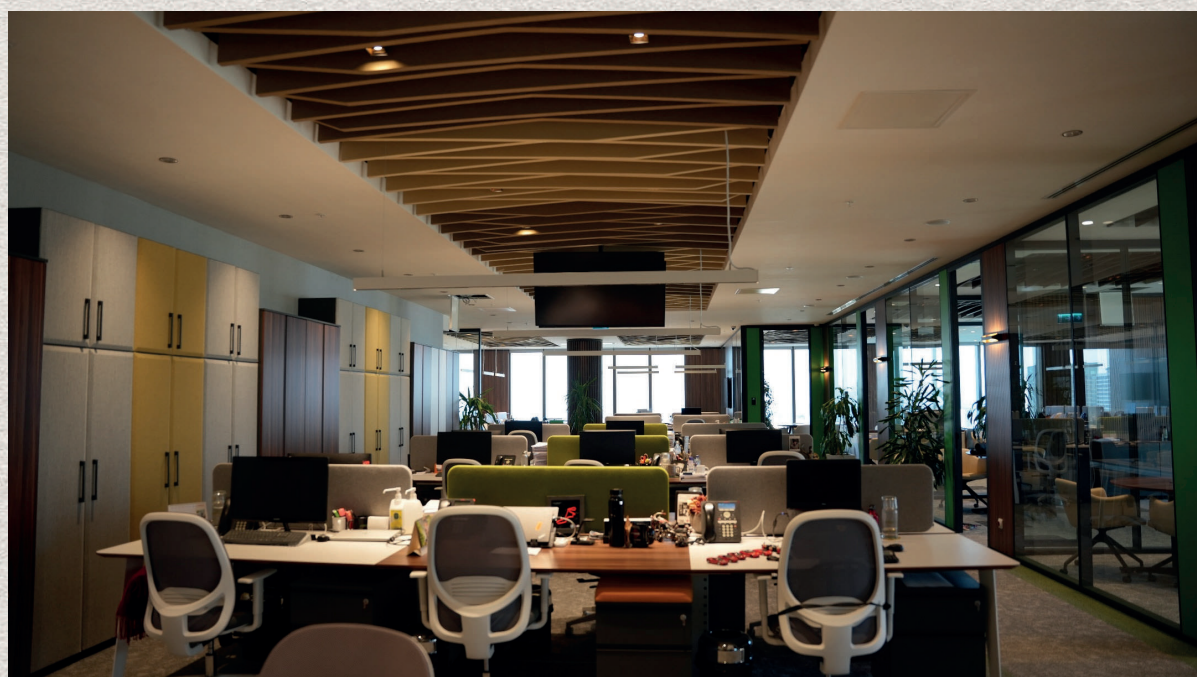
Sanat | Yapı

سانات يابي

Location : İstanbul
Type : Office Building
Works done : Main and fine construction,
electrical and mechanical
construction, decoration
Area : 2.000 Sq meters
Duration : 2 months
Completed : 2024

COMPLETED PROJECTS

intercity



COMPLETED PROJECTS

NG

NG KÜTAHYA
SERAMİK
ETİLER
SHOWROOM

Sanat | Yapı

سانات یابی

Location :İstanbul
Type :Showroom Renovation
Works done : Fine construction
Area :1.300 Sq meters
Duration : 4 months
Completed : 2023

COMPLETED PROJECTS

NG



COMPLETED PROJECTS

NG

NG KUTAHYA
SERAMIK
HEAD
OFFICE

Sanat | Yapı

سانات يابي

Location : Kütahya
Type : Office Building - Renovation
Works done : Fine construction
Area : 1.300 Sq meters
Duration : 4 months
Completed : 2022

COMPLETED PROJECTS

NG



COMPLETED PROJECTS

ENUYGUN

**ENUYGUN
OFIS
BUILDING**

Sanat | Yapı
سانات يابي

Location : Istanbul
Type : Office Building
Works done : Main and fine construction,
Area : Electrical and Mechanical
Duration : construction, Decoration
Completed : 2.500 Sq meters
: 2 months
: 2018

COMPLETED PROJECTS

İLK PLAZA



Location :Ataşehir, İstanbul
Type : Office building
Works done :Main and fine construction,
Electrical and Mechanical
Construction, Decoration
Area :1.500 Sq meters
Duration : 8 months
Completed : 2014

As undertaking all the main, fine, electrical and mechanical construction, and contributing to the architectural design, Sanat Yapı has brought an A++ office building to Ataşehir district.

COMPLETED PROJECTS

FEYZIYE SCHOOLS
FOUNDATION
IŞIK SCHOOLS
FLORYA CAMPUS

Sanat | Yapı

سانات یابی

Location : İstanbul
Type : School
Works done : Construction works
Area : 28.000 Sq meters
Duration : 16 months
Completed : 2022

COMPLETED PROJECTS

ANADOLU HOLDING FOUNDATION NEVŞEHİR HIGH SCHOOL



Location :Nevşehir
Type :School
Works done :Main and fine construction
Area :8.000 Sq meters
Duration :12 months
Completed :2022

COMPLETED PROJECTS

NUN SCHOOLS



Location : İstanbul
Type : School
Works done : Main and fine construction
Area : 5.000 Sq meters
Duration : 4 months
Completed : 2021

COMPLETED PROJECTS

FORD
OTOSAN

**FORD OTOSAN
İNÖNÜ PLANT**

Sanat | Yapı

ساعات يابي

Location :İnönü/Eskişehir
Type :Industrial Plant
Works done :Construction Works
Area :5.100 Sq meters
Duration :18 months
Completed :2023

BOSCH EDUCATION & SERVICE CENTER

Sanat Yapı has completed Bosch Education & Service Center's construction in the year of 2007.

| | |
|-------------------|--|
| Location | :Maslak, İstanbul |
| Type | :Education & Service Center |
| Works done | :Fine construction, electrical and mechanical construction |
| Area | :3.800 Sq meters |
| Duration | :5 months |
| Completed | :2007 |

OTOKOÇ AUTOMOTIVE

Sanat Yapı has completed Otokoç Automotive Showroom & Auto Service Stations' renovation in the years of 2009 & 2012.

| | |
|-------------------|-----------------------------|
| Location | : İstinye, İstanbul |
| Type | : Showroom & Auto Service |
| Works done | : Renovation and decoration |
| Area | : 4.900 Sq meters |
| Duration | : 4 months |
| Completed | : 2012 |

| | |
|-------------------|---------------------------|
| Location | Samsun |
| Type | Showroom & Auto Service |
| Works done | Renovation and decoration |
| Area | 2.600 Sq meters |
| Duration | 4 months |
| Completed | 2009 |

BİRMOT AUTOMOTIVE

Sanat Yapı has completed Birmot Automotive Showroom & Auto Service Stations' renovation in the years of 2008, 2009 & 2012.

| | |
|-------------------|-----------------------------|
| Location | : Antalya |
| Type | : Showroom & Auto Service |
| Works done | : Renovation and decoration |
| Area | : 4.700 Sq meters |
| Duration | : 4 months |
| Completed | : 2012 |

| | |
|-------------------|-----------------------------|
| Location | : Zincirlikuyu, İstanbul |
| Type | : Showroom & Auto Service |
| Works done | : Renovation and decoration |
| Area | : 5.700 Sq meters |
| Duration | : 3 months |
| Completed | : 2009 |

| | |
|-------------------|-----------------------------|
| Location | : Samsun |
| Type | : Showroom & Auto Service |
| Works done | : Renovation and decoration |
| Area | : 2.100 Sq meters |
| Duration | : 3 months |
| Completed | : 2008 |



SANAT YAPI

COMPLETED PROJECTS

| PROJECT NAME | CLIENT INVESTOR | CONTRACT VALUE | PROJECT TYPE |
|--|--|---------------------|---|
| FMV Işık Schools - Florya | FEVZİYE MEKTEPLERİ VAKFI | 16.352.683 \$ + VAT | Structural Works / Shell & Core Construction |
| Miget Meat Production Facility | MİGROS TİCARET A.Ş. | 2.529.411 \$ + VAT | Structural Works, Façade, Finishing Works, Electrical and Mechanical Works |
| Mahmut-Dudu Yazıcı Anatolian High School Construction Project | ANADOLU EĞİTİM VE SOSYAL YARDIM VAKFI/ PROJE YÖNETİMİ: PROPLAN Proje Yönetim ve Danışmanlık Tic. A.Ş. | 2.611.707 \$ + VAT | Structural, Finishing, Electrical, Mechanical, Landscaping and Infrastructure Works |
| İBB Waste Incineration and Energy Production Facility Construction Project | METGÜN İNŞAAT TAAHÜT VE TİCARET A.Ş. | 1.491.286 \$ + VAT | Administrative Building and Conference Hall Finishing and Decoration Works |
| Istanbul Airport Duty-Free and Warehouse Construction Project | UNIFREE DUTY FREE İŞLETMECİLİĞİ A.Ş. | 10.141.916 \$ + VAT | WP1 Finishing Works, WP2 Floors B+C – Finishing, Mechanical and Electrical Works |
| Istanbul New Airport Unifree Offices | UNIFREE DUTY FREE İŞLETMECİLİĞİ A.Ş. | 2.358.728 \$ + VAT | WP5 Floor E – Unifree Offices Fit-Out, Electrical and Mechanical Works |
| Aytemiz Headquarters Building | AYTEMİZ AKARYAKIT DAĞITIM A.Ş. | 2.407.518 \$ + VAT | Demolition, Façade, Finishing Works, Electrical and Mechanical Works, Decoration |
| Metropol Shopping Mall | KEFELİ GAYRİMENKUL GELİŞTİRME İNŞ. SAN. VE TİC. A.Ş. – DEKÖRSELL EMLAK YATIRIM GAYRİMENKUL LTD. ŞTİ. ADI ORTAKLIĞI | 2.278.912 \$ + VAT | Shopping Mall Decoration Works |
| Sivas Prime Mall | PRIME DEVELOPMENT | 9.430.000 \$ + VAT | Electrical, Mechanical, and Finishing Works Construction |
| Turkcell Headquarters Building | TABANLIOĞLU | 3.810.984 \$ + VAT | Finishing, Electrical and Mechanical Works, Decoration |

***Our completed projects reflect a reference list built on years of experience.



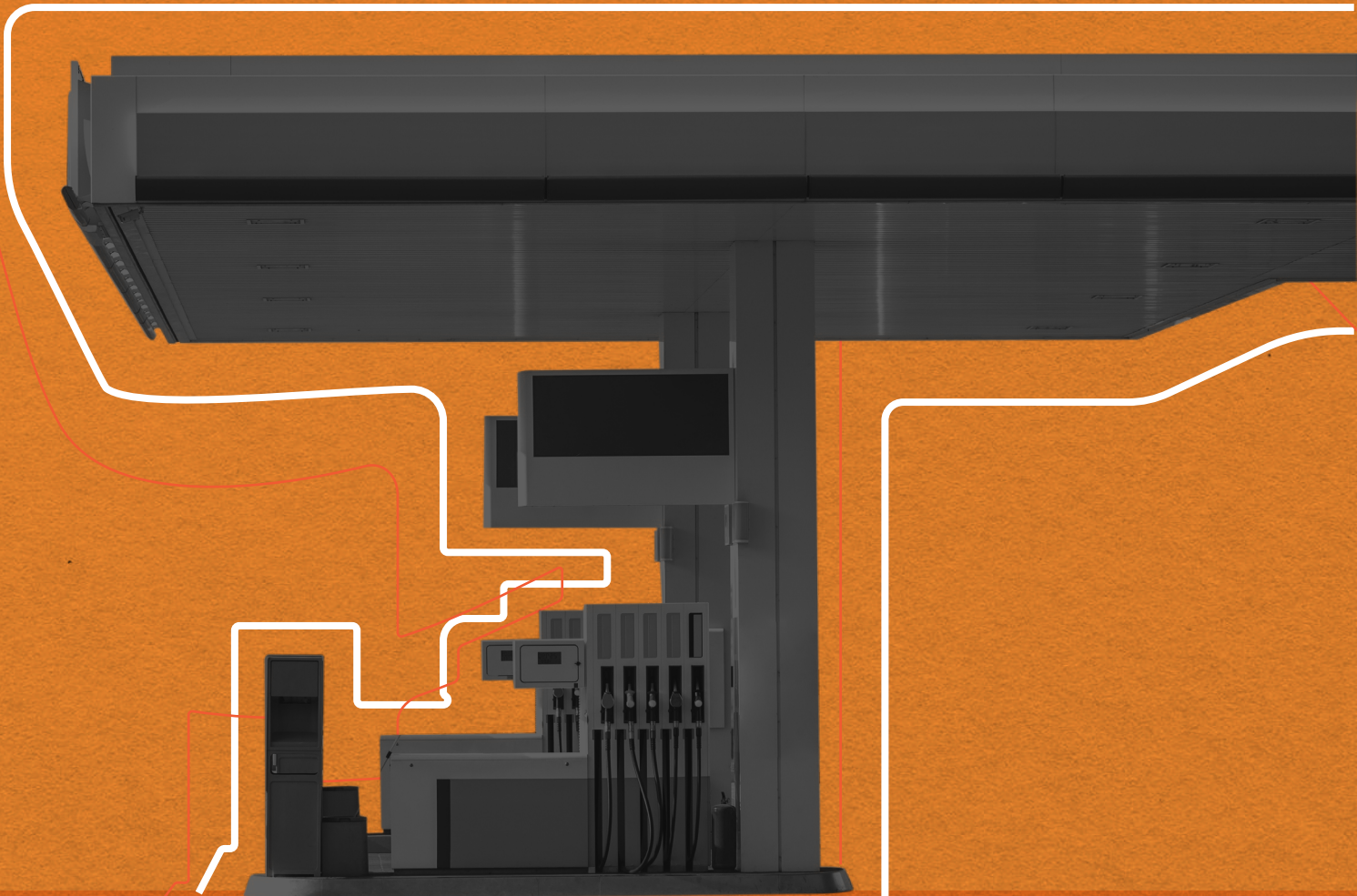
Please scan the QR code to follow our completed projects.



SANAT YAPI

GAS & SERVICE STATIONS

Gas & Service Stations



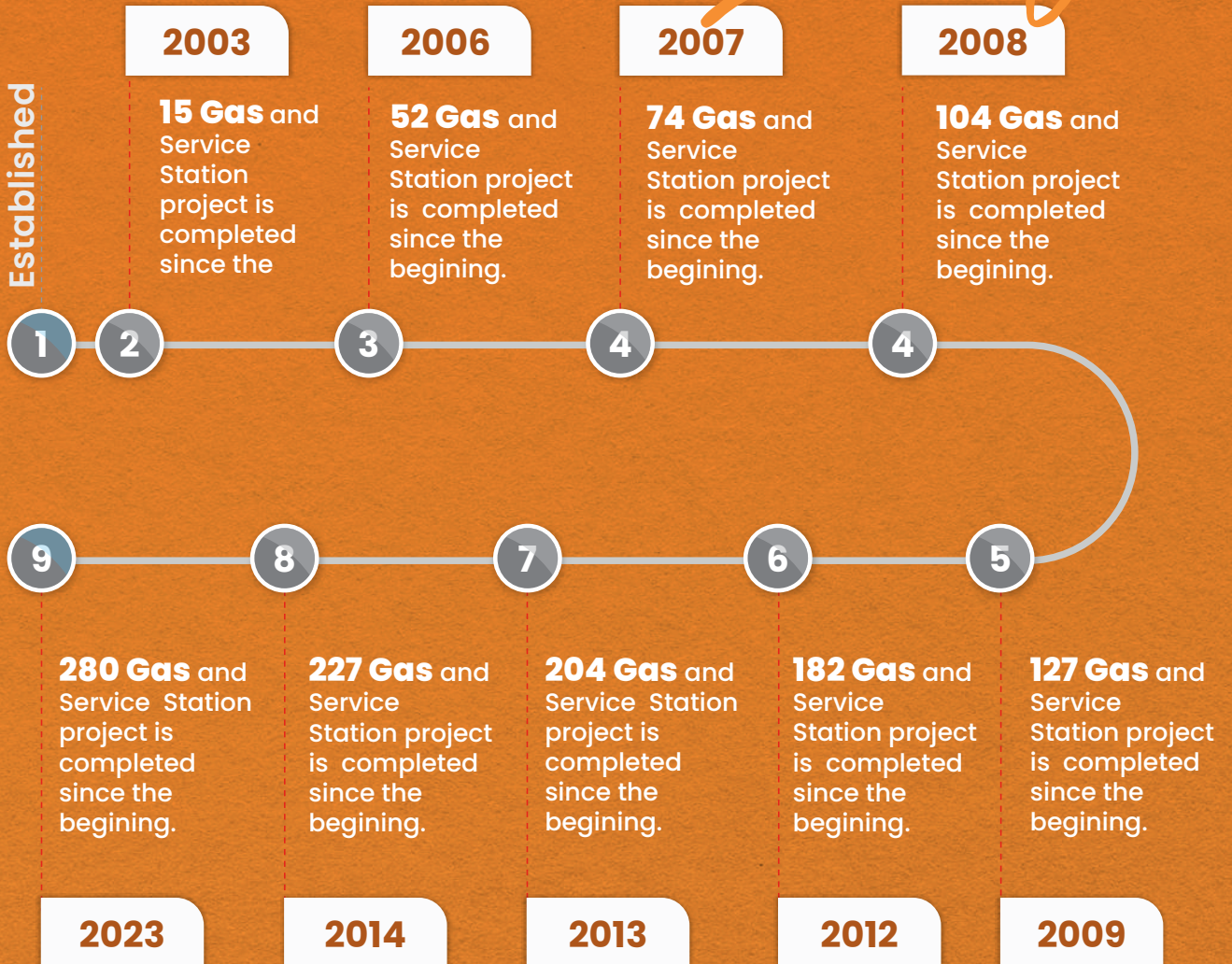
SANAT YAPI

1265 STATIONS IN 19 YEARS

1265 Stations In 19 Years

2001

Established



***Amount of completed Gas & Service Station construction by year.

790 Stations
1265 STATIONS
IN 19 YEARS



We have successfully completed dozens of Shell Gas & Service Station turnkey construction and renovation projects all around the country.

More than **50.000** Sq meters of construction is completed up to this point.

Our firm is Shell Turkey's A-class accredited contractor and we are able to provide services in all parts of the country.

194 Shell Gas & Service Stations have been completed by our firm since **2001**.



790 Stations
1265 STATIONS
IN 19 YEARS



Petrol Ofisi

Sanat | Yapı

سانات يابي

We have successfully completed dozens of Petrol Ofisi Gas & Service Station turnkey construction and renovation projects all around the country.

More than 50.000 Sq meters of construction is completed up to this point. Our firm is Petrol Ofisi's A-class accredited contractor and we are able to provide services in all parts of the country.

176 Petrol Ofisi Gas & Service Stations have been completed by our firm since 2001.



799 Stations
1265 STATIONS
IN 19 YEARS

opet

Sanat | Yapı

سانات يابي

We have successfully completed dozens of Opet Gas & Service Station turnkey construction and renovation projects all around the country.

More than **50.000** Sq meters of construction is completed up to this point.

Our firm is Opet's A-class accredited contractor and we are able to provide services in all parts of the country.

162 Opet Gas & Service Stations have been completed by our firm since **2001**.



1265 STATIONS
IN 19 YEARS



Sanat | Yapı

سانات يابي

We have successfully completed 98 Total Gas & Service Station turnkey construction and renovation projects all around the country since 2001.

Our firm is Total's A-class accredited contractor and we are able to provide services in all parts of the country.



799 Stations
1265 STATIONS
IN 19 YEARS



Sanat | Yapı

ساعات يابي

We have successfully completed **38** Aytemiz Gas & Service Station turnkey construction and renovation projects all around the country since 2001.

Our firm is Aytemiz's A-class accredited contractor and we are able to provide services in all parts of the country.



1265 STATIONS
IN 19 YEARS



We have successfully completed 30 BP Gas & Service Station turnkey construction and renovation projects all around the country since 2001.

Our firm is BP's A-class accredited contractor and we are able to provide services in all parts of the country.





سانات يابي

Our firm is Kadoil's A-class accredited contrator and we are able to provide services in all parts of the country.



799 Stations
1265 STATIONS
IN 19 YEARS



Sanat | Yapı

ساعات يابي

We have successfully completed 10 Alpet Gas & Service Station turnkey construction and renovation projects all around the country since 2001.

Our firm is Alpet's A-class accredited contractor and we are able to provide services in all parts of the country



799 Stations
1265 STATIONS
IN 19 YEARS



We have successfully completed 8 Socar Gas & Service Station turnkey construction and renovation projects all around the country since 2018.

Our firm is Socar's A-class accredited contractor and we are able to provide services in all parts of the country



799 Stations
1265 STATIONS
IN 19 YEARS



We have successfully completed 7 Lukoil Gas & Service Station turnkey construction and renovation projects all around the country since 2001.

Our firm is Lukoil's A-class accredited contractor and we are able to provide services in all parts of the country



799 Stations
1265 STATIONS
IN 19 YEARS

GO'

Sanat | Yapı

ساعات يابي

We have successfully completed 7 GO Gas & Service Station turnkey construction and renovation projects all around the country since 2001.

Our firm is GO's A-class accredited contractor and we are able to provide services in all parts of the country



1265 STATIONS
IN 19 YEARS



**TÜRKİYE
PETROLLERİ**

ANONİM ORTAKLIĞI

Sanat | Yapı

ساعات يابي

We have successfully completed 10 Türkiye Petrolleri Gas & Service Station turnkey construction and renovation projects all around the country since 2001.

Our firm is Türk Petrolleri's A-class accredited contractor and we are able to provide services in all parts of the country



SANAT YAPI REFINERY PROJECT

Refinery Project



799 Stations
In 10 Years

REFINERY PROJECT



Sanat Yapı has completed Alpet Samsun Filling Facility Project's main construction in the year of 2005.

Location : Samsun
Type : Industrial Plant
Works done : Main construction
Area : 19.800 Sq meters
Duration : 8 months
Completed : 2005



PETKİM ALİAĞA FACILITY WAREHOUSE BUILDING



Sanat Yapı has completed Petkim Aliğa Facility Warehouse Building's construction in the year of 2002.

Location : Samsun
Type : Industrial Plant
Works done : Main construction
Area : 19.800 Sq meters
Duration : 8 months
Completed : 2005



799 Stations
In 10 Years

REFINERY
PROJECT

REFINERY PROJECT





SANAT YAPI

CONSTRUCTION INC.

MACHINERY AND EQUIPMENT STATUS

| NO | TYPE AND DESCRIPTION | QUANTITY | AGE | CAPACITY | CURRENTLY IN USE | LOCATION (IN USE OR STORED) |
|----|--------------------------------------|-----------------------|-----|----------|------------------|-----------------------------|
| 1 | Jaso N110 Tower Crane | 1 | 8 | 8 Tons | In Use | Construction Sites |
| 2 | Mobile Crane | 1 | 5 | 10 Tons | In Use | Construction Sites |
| 3 | H-Type Table Scaffold | 15,000 m ² | 3 | | In Use | Construction Sites |
| 4 | Joint Cutting Machine | 10 | 4 | | In Use | Construction Sites |
| 5 | Demolition Hammer (Hilti) | 30 | 3 | | In Use | Construction Sites |
| 6 | Concrete Surface Trowel (Helicopter) | 5 | 5 | | In Use | Construction Sites |
| 7 | Rotary Hammer Drill | 50 | 2 | | Not in Use | Warehouse |
| 8 | Concrete Mixer | 2 | 4 | | Not in Use | Warehouse |
| 9 | Rebar Cutting Machine | 4 | 1 | | In Use | Construction Sites |
| 10 | Rebar Bending Machine | 4 | 1 | | In Use | Construction Sites |
| 11 | Welding Machine | 4 | 3 | | In Use | Construction Sites |
| 12 | Compressor | 2 | 2 | | In Use | Construction Sites |
| 13 | Container | 45 | 5 | | In Use | Construction Sites |
| 14 | Multi-Story Prefabricated Structure | 6 units | 2 | | In Use | Construction Sites |
| 15 | Hydraulic Scaffold | 1 set | 2 | | In Use | Construction Sites |
| 16 | Work Scaffold | 8,000 m ² | 2 | | In Use | Construction Sites |
| 17 | Passenger Vehicle | 6 | 6 | | In Use | Construction Sites |
| 18 | MOBO (Security Cabin) | 6 | 5 | | In Use | Construction Sites |
| 19 | MANITOU Construction Machine | 3 | 1 | | In Use | Construction Sites |

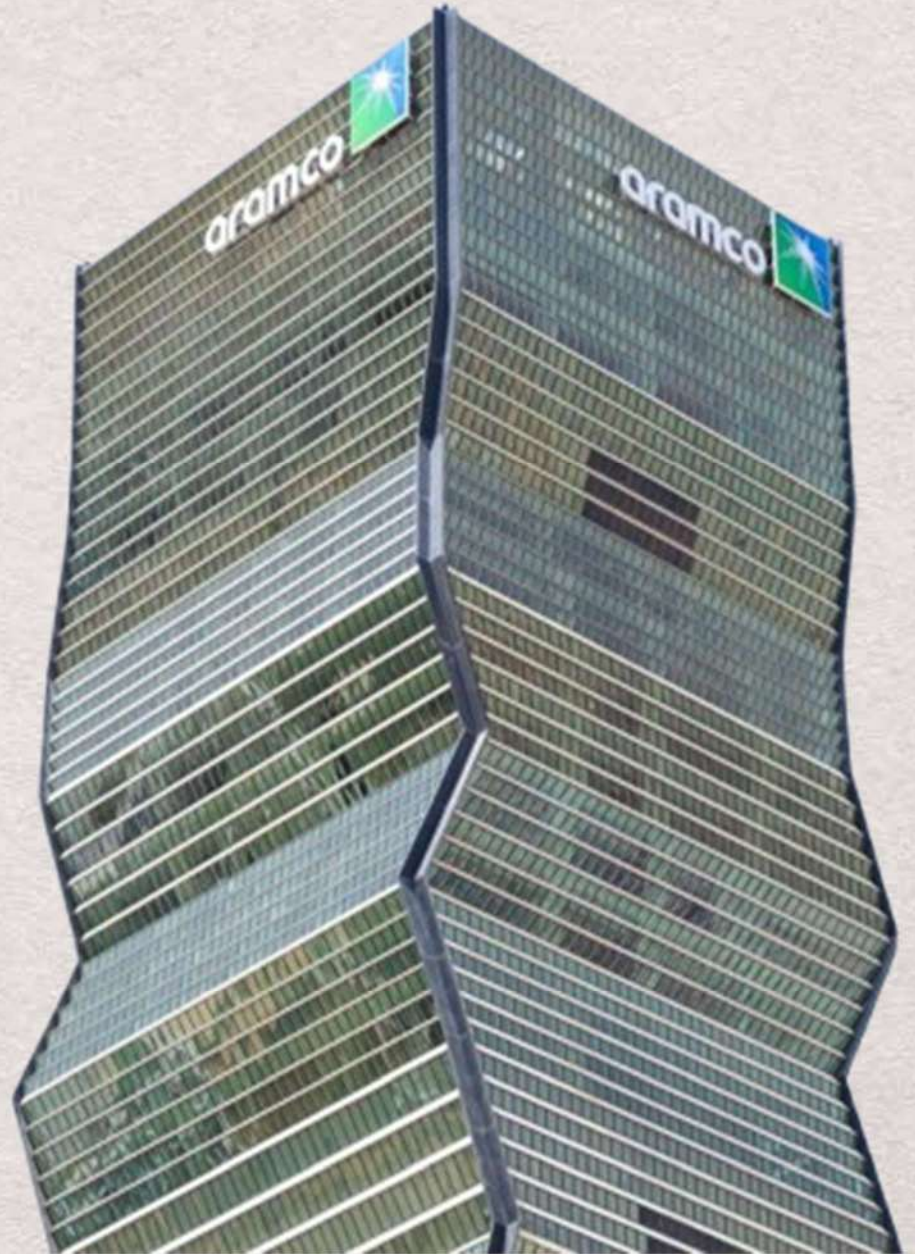
MANAGED PROJECTS



PIF Head Quarter Tower Project – P1.16

| | |
|---------------|--|
| Location | : Riyadh / KSA |
| Type | : Tower Project |
| Works done | : Construction and fit-out works of 27 floors at the PIF |
| Client | : SAPL and KAFD |
| Project Value | : 490.000.000 SAR |
| Completed | : 2025 |

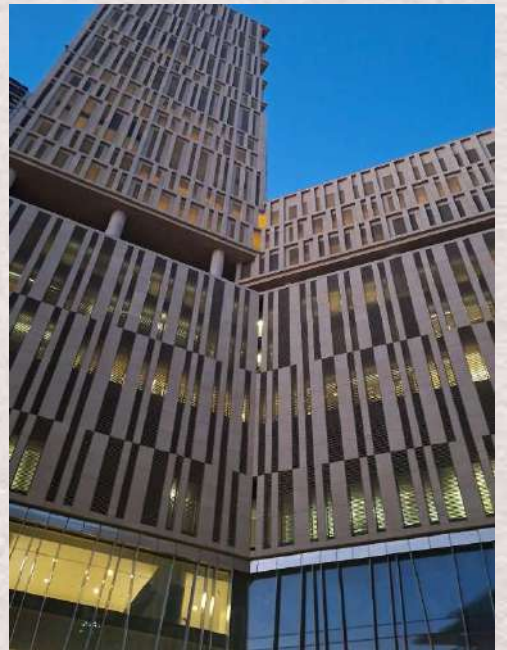
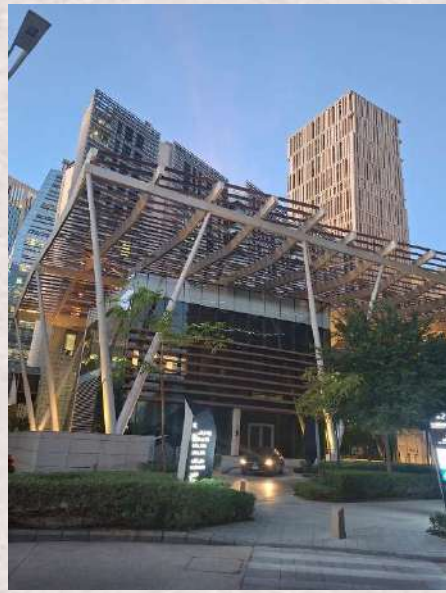
MANAGED PROJECTS



Aramco Head Quarter P2.13

| | |
|---------------|-------------------------------|
| Location | : Riyadh / KSA |
| Type | : Tower Project |
| Works done | : Completion of Fit out works |
| Client | : Aramco |
| Project Value | : 105.000.000 SAR |
| Completed | : 2023 |

MANAGED PROJECTS



KAFD CP04 a & b Projects

| | |
|---------------|---|
| Location | : Riyadh / KSA |
| Type | : Tower Project |
| Works done | : Completion of Civil, Architectural and MEP works of 7 parcels in KAFD |
| Client | : SAPL, DAH and KAFD |
| Project Value | : 684.000.000 SAR |
| Completed | : 2022 |

MANAGED PROJECTS



NEOM Airport Upgrade



NEOM Airport Upgrade Project

| | |
|---------------|---|
| Location | : Sharma / KSA |
| Type | : Tower Project |
| Works done | : Completion of Airport Terminal Building |
| Client | : NEOM |
| Project Value | : 20.000.000,00 SAR |
| Completed | : 2019 |

MANAGED PROJECTS



Jabal Omar Development Project Zones S3 - S4



Jabal Omar Hotel Project

| | |
|---------------|---|
| Location | : Makkah / KSA |
| Type | : Tower Project |
| Works done | : Finishing works in 5 Star Hotel Project |
| Client | : Saudi Arabian Baytur |
| Project Value | : 8.000.000 \$ |
| Completed | : 2019 |

PREVIOUS APPROVALS

A1 - Parcel 1.16 - PIF Tower
TBA
TBA
Riyadh Saudi Arabia



| | | |
|----------------------|------------------|------------------|
| MAIL TYPE | MAIL NUMBER | REFERENCE NUMBER |
| Workflow Transmittal | SAP-WTRAN-122094 | SAP-WTRAN-122094 |

Final (WF-069147) SAB to SAP - KAFD00273 - (P1.16 – MEP-PQD) -
Prequalification Approval for SANAT YAPI CONSTRUCTION for FAS Integration and
Troubleshooting Works & Handing Over Activities

From: Mr Moidin Shafi - SAUDI ARABIAN PARSONS LIMITED



To (2): Mr Moidin Shafi - SAUDI ARABIAN PARSONS LIMITED (+1 more...)

Cc (4): DC Development - King Abdullah Financial District Development & Management (+3 more...)

Sent: Sunday, 19 October 2025 3:38:02 PM AST (GMT +03:00)

Status: N/A

DOCUMENT ATTACHMENTS (2)

| (0 selected) | | | | | |
|---|-------------------------------|----------|---------------|---|----------------------------|
| File | Document No | Revision | Revision Date | Title | Status |
|  | KAFD-A1-116-SAB-MEP-OCS-00005 | R00 | 13/10/2025 | Prequalification Approval for SANAT YAPI CONSTRUCTION for FAS Integration and Troubleshooting Works & Handing Over Activities | B - Approved with Comments |
|  | KAFD-A1-116-SAB-MEP-PQD-00014 | R00 | 13/10/2025 | Prequalification Approval for SANAT YAPI CONSTRUCTION for FAS Integration and Troubleshooting Works & Handing Over Activities | B - Approved with Comments |

ATTRIBUTES

Attribute 1 MEP - Mechanical & Electrical & Plumbing

MESSAGE

Workflow Review History

S E R T İ F İ K A

C E R T I F I C A T E

İŞ SAĞLIĞI VE GÜVENLİĞİ YÖNETİMİ
OCCUPATIONAL HEALTH AND SAFETY MANAGEMENT

SANAT YAPI İNŞAAT ANONİM ŞİRKETİ

kuruluşunun,
company,

Ataşehir Bulvarı Gülibrişim Cad. Evinpark Rezidance B-1 Blok 1-2
Ataşehir / İstanbul / Türkiye

adresinde,
at address,

ALT YAPI VE ÜST YAPI İNŞAAT TAAHÜT
HİZMETLERİ

INFRASTRUCTURE AND SUPERSTRUCTURE CONSTRUCTION
CONTRACTING SERVICES

kapsamında
at scope

iş sağlığı ve güvenliği yönetim sistemi yürürlüğe koyduğu,
perform the occupational health and safety management system,

ISO 45001: 2018

standart taleplerinin yerine getirildiği belirlenmiştir.
the complete of the standard was determined.

İlk Yayın Tarihi / Date First Registered : 02.05.2025
Yayın Tarihi / Date Certificate Issued : 02.05.2025
Geçerlilik Periyodu / Period of Registration : 3 Yıl / Years
Geçerlilik Tarihi / Date Certificate Expires : 01.05.2026
Sertifika Numarası / Certificate No : 04/14191/01

Onay:
Approved by:

Bu sertifikanın geçerliliği, yılda en az bir kez yapılacak gözetim denetiminin başarılı geçmesine bağlıdır. Bu durumda belge yeniden düzenlenecektir.
The Validity of this certificate, subject to successful completion of surveillance audit which will take place at least once a year. In this case, the document will be revised.

ASB Uluslararası Belgelendirme Gözetim Denetim ve Eğitim Hiz. Ltd. Şti. / ASB International Certification Surveillance, Auditing and Training Services Ltd. Company
Tatissu Mh. Akif İnan Sk. Sevim Residence No:16 Daire:13 Kat:06 Ümraniye - İstanbul / TÜRKİYE Tel: +90 216 526 10 04 Fax: +90 216 526 30 91 e-mail: bilgi@asbcert.com
Bu sertifika, kuruluşun ASB'nin şartlarına uyduğu sürece geçerlidir. Sertifikanın durumu www.asbcert.com.tr adresinden kontrol edilebilir.
The Validity shall remain in force as long as the corporation follows instructions of ASB. Certificates status can be checked at www.asbcert.com.tr



S E R T İ F İ K A

C E R T I F I C A T E

KALİTE YÖNETİMİ / QUALITY MANAGEMENT

SANAT YAPI İNŞAAT ANONİM ŞİRKETİ

*kuruluşunun,
company,*

Ataşehir Bulvarı Güllibrişim Cad. Evinpark Rezidance B-1 Blok 1-2
Ataşehir / İstanbul / Türkiye

*adresinde,
at address,*

**ALT YAPI VE ÜST YAPI İNŞAAT TAAHÜT
HİZMETLERİ**

*INFRASTRUCTURE AND SUPERSTRUCTURE CONSTRUCTION
CONTRACTING SERVICES*

*kapsamında
at scope*

*kalite yönetim sistemi yürürlüğe koyduğu,
perform the quality management system,*

ISO 9001: 2015

*standart taleplerinin yerine getirildiği belirlenmiştir.
the complete of the standard was determined*

İlk Yayın Tarihi / Date First Registered : 02.05.2025
Yayın Tarihi / Date Certificate Issued : 02.05.2025
Geçerlilik Periyodu / Period of Registration : 3 Yıl / Years
Geçerlilik Tarihi / Date Certificate Expires : 01.05.2026
Sertifika Numarası / Certificate No : 01/14191/01



Onay: 
Approved by:



Bu sertifikanın geçerliliği, yılda en az bir kez yapılacak gözetim denetiminin başarılı geçmesine bağlıdır. Bu durumda belge yeniden düzenlenecektir.
The Validity of this certificate, subject to successful completion of surveillance audit which will take place at least once a year. In this case, the document will be revised.

S E R T İ F İ K A

C E R T I F I C A T E

ÇEVRE YÖNETİMİ / ENVIRONMENTAL MANAGEMENT
SANAT YAPI İNŞAAT ANONİM ŞİRKETİ

kuruluşunun,
company,

Ataşehir Bulvarı Gülibrişim Cad. Evinpark Rezidance B-1 Blok 1-2
Ataşehir / İstanbul / Türkiye

adresinde,
at address,

ALT YAPI VE ÜST YAPI İNŞAAT TAAHÜT
HİZMETLERİ

INFRASTRUCTURE AND SUPERSTRUCTURE CONSTRUCTION
CONTRACTING SERVICES

kapsamında
at scope

çevre yönetim sistemi yürürlüğe koyduğu,
perform the environmental management system,

ISO 14001: 2015

standart taleplerinin yerine getirildiği belirlenmiştir.
the complete of the standard was determined.

İlk Yayın Tarihi / Date First Registered : 02.05.2025
Yayın Tarihi / Date Certificate Issued : 02.05.2025
Geçerlilik Periyodu / Period of Registration : 3 Yıl / Years
Geçerlilik Tarihi / Date Certificate Expires : 01.05.2026
Sertifika Numarası / Certificate No : 02/14191/01



TÜRKAK BDS NO
YS-0CDB-B390

Onay:

Approved by:



Bu sertifikanın geçerliliği, yılda en az bir kez yapılacak gözetim denetiminin başarılı geçmesine bağlıdır. Bu durumda belge yeniden düzenlenecektir.
The validity of this certificate, subject to successful completion of surveillance audit which will take place at least once a year. In this case, the document will be revised.

ASB Uluslararası Belgelendirme Gözetim Denetim ve Eğitim Hiz. Ltd. Şti. / ASB International Certification Surveillance, Auditing and Training Services Ltd. Company
Tatlısu Mh. Akif İnan Sk. Sevim Residence No:16 Daire:13 Kat:06 Ümraniye – İstanbul / TÜRKİYE Tel: +90 216 526 10 04 Fax: +90 216 526 30 91 e-mail: bilgi@asbcert.com.tr
Bu sertifika, kuruluşun ASB'nin şartlarına uyduğu sürece geçerlidir. Sertifikanın durumu www.asbcert.com.tr adresinden kontrol edilebilir.
The validity shall remain in force as long as the corporation follows instructions of ASB. Certificates status can be checked at www.asbcert.com.tr

Commercial Registration Certificate

SANAT YAPI Company

- National Number : 7050205678
- Release date : 27/05/2025
- Entity Type : Limited liability company
- Company Characteristics : (One person)
- Status : Active

Basic data of the commercial register



CERTIFICATE



TIN 3130272134 الرقم المميز
Certificate No. 100251149717204 رقم الشهادة
Certificate date 23/06/2025 تاريخ الشهادة



هيئة الزكاة والضريبة والجمارك
Zakat, Tax and Customs Authority

المملكة العربية السعودية
Kingdom of Saudi Arabia

شهادة تسجيل في ضريبة القيمة المضافة VAT Registration Certificate

تشهد هيئة الزكاة والضريبة والجمارك بأن المكلف أدناه مسجل في ضريبة القيمة المضافة بتاريخ ٢٠٢٥/٠٦/٢٣ م
The Zakat, Tax and Customs Authority certifies that taxpayer below is VAT registered on 23/06/2025 AD

| | | |
|-----------------------------|---|-------------------------------|
| Taxpayer Name | شركة سانات ياباي | اسم المكلف |
| VAT Registration Number | 313027213400003 | رقم التسجيل الضريبي |
| Effective Registration Date | 2025/07/01 | تاريخ نفاذ التسجيل |
| Taxpayer Address | Al Woroud, King Abdullah Ibn Abdulaziz Saud Branch, 12253, الرياض | عنوان المكلف |
| CR / License | 7050205678 | رقم السجل التجاري |
| Contact / ID No | | / الرخصة / العقد / الهوية |
| Tax Period | ربع سنوي - Quarterly | الفترة الضريبية |
| First Filing due date | 2025/10/31 | تاريخ استحقاق أول إقرار ضريبي |

ملاحظة: كمكلفين مسجلين في ضريبة القيمة المضافة، لا يجوز لكم تحصيل ضريبة القيمة المضافة من عملائكم قبل تاريخ نفاذ التسجيل في الضريبة. وفي حال تبين غير ذلك ستقوم هيئة الزكاة والضريبة والجمارك بتنفيذ الغرامات المستحقة

Note: As a VAT registered taxpayer, you are not allowed to collect VAT from your customers prior to the effective date of the tax registration. If otherwise approved, The ZAKAT, Tax and Customs Authority will impose the applicable penalties



CERTIFICATE

| شهادة اشتراك Membership Certificate | | رياضة الرياض Riyadh Chamber | |
|--|------------|---|------------|
| Membership No. : | 1140243 | رقم العضوية الموحدة : | 1140243 |
| Date of Issue: | 27/05/2025 | تاريخ الصداق: | 2025/05/27 |
| Membership Class : | Third | درجة العضوية : | الثالث |
| Riyadh Chamber Certifies | | تشهد اللجنة الثانية المتتالية بالرياض بأن | |
| SANAT YAPI Company | | شركة سانات يابي | |
| Commercial Registration No. | 7050205678 | مفيدة بالمدخل التجاري / الترخيص رقم : | 7050205678 |
| National Number | 7050205678 | الرقم الموحد : | 7050205678 |
| Certificate Expires on | 26/05/2026 | ينتهي سريان هذه الشهادة في | 2026/05/26 |



وزارة الاستثمار
Ministry of Investment

رقم التسجيل للاستثمار Investment Registration Number: **01206407709392**

تاريخ التسجيل Date Registered: **01 Jan 2020**

تاريخ التجديد Renewal Date: **01 Jan 2020**

رقم الوثيقة Investment Document Number: **01206407709392**

تاريخ الوثيقة Investment Document Date: **01 Jan 2020**



Print Date: 21 Aug 2020

شهادة تسجيل الاستثمار

| | | |
|---|---|---|
| الاسم التجاري Trade Name | رقم الترخيص License No. | مستفيد Beneficiary |
| Business Type | Entity Name | Investor Name |
| الكلية التجارية Commercial Sector | الهيئة العامة للغذاء والدواء Ministry of Health | الهيئة العامة للغذاء والدواء Ministry of Health |
| الجنسية Nationality | رقم الترخيص License No. | الهيئة العامة للغذاء والدواء Ministry of Health |
| 100 % | 100 % | 100 % |

هذا المستند هو وثيقة رسمية صادرة عن وزارة الاستثمار في المملكة العربية السعودية.

For the validity this document and that more details about the investment registration and its related activities by visiting the Ministry of Investment's website or by scanning the QR code at the top.



الوزارة العامة للاستثمار
Ministry of Investment



رؤية 2030
Vision 2030
Sustainable Development
التنمية المستدامة

Riyadh Chamber Membership Certificate

Investment Registration Certificate



التأمينات الاجتماعية
Social Insurance

Ref: 140704/08
Generation: 2021/11/2008
Certificate Code: 130000007

Statement Of Wages and Contribution

| | |
|--|-----------------|
| Establishment Name: شركة مساهمة بابطين | INN: 7050026078 |
| Registration Number: 6553030326 | Address: |

The period covered by the statement is from: 01/06/2025 to: 30/06/2025 .

| | |
|---|---|
| Total wages subject to contributions for Non-Social contributions | Total wages subject to contributions for Social contributions |
| 20,067.00 | 23,060.00 |

| | |
|---|------------------------------------|
| Total Contributions Amount Paid to GOSI | Total Late Fee Amount Paid to GOSI |
| 5,900.04 | 0.00 |

The statement was issued at the request of the establishment, and based on the information and documents submitted by it during the mentioned period. Its use is limited to Zakat, Tax and Customs Authority only, and does not represent a certificate of fulfillment of the establishment's obligations towards the General Organization for Social Insurance (GOSI).

(This is a system generated document and does not need to be signed or stamped)



Public

Verify the authenticity and validity of the certificate by visiting the link below on the General Organization for Social Insurance website or by using the following identification code:

هذا الوثيقة هي مستند تلقائي صادر من قبل النظام ولا يحتاج إلى توقيع أو ختم. استخدامه مقصور على مصلحة الضرائب، مصلحة الجمارك ومصلحة الزكاة فقط. لا تمثل هذه الوثيقة تعديلاً أو تأكيداً على التزام المؤسسة بالتأمينات الاجتماعية. الوثيقة هي مستند تلقائي صادر من قبل النظام ولا يحتاج إلى توقيع أو ختم. استخدامه مقصور على مصلحة الضرائب، مصلحة الجمارك ومصلحة الزكاة فقط. لا تمثل هذه الوثيقة تعديلاً أو تأكيداً على التزام المؤسسة بالتأمينات الاجتماعية.

الرقم التعريفي: 130000007
الجهة: شركة مساهمة بابطين
الرقم: 6553030326

الجهة: شركة مساهمة بابطين
الرقم: 6553030326
الرقم التعريفي: 130000007

08 04 000
gosi.gov.sa

GOSI- ZAKAT Certificate

QIWA
وقى

الهيئة العامة للغات
والتأهيل الوطني

Nationalization Certificate

| | | | | | |
|-------------------------|--|------------|------------|-----------------|------------|
| Certificate ID | 118687-67801755 | Issue date | 05/08/2025 | Expiration date | 05/12/2025 |
| Renewal/update date | 06/09/2025 | | | | |
| Certificate status |  Verified | | | | |
| Establishment name | شركة سانات بايبي | | | | |
| Establishment Number | 1+4472245 | | | | |
| License Number | — | | | | |
| National Unified Number | 7050205678 | | | | |
| Nitaqat color |  Platinum | | | | |
| Nationalization rate | 22 % | | | | |

VISION رؤية
2030

The Ministry of Human Resources and Social Development certifies that
the above mentioned Establishment has achieved the required

المملكة العربية السعودية تلتزم بأنشطة التدريب والتأهيل التي تتطلبها

Nationalization Certificate

Sanat | Yapı

سانات يابي

*We Bring Art to
Structures and Aesthetic to Life.*



SANAT YAPI

2001 - 2025

Floor 3, Bldg 2829
King Abdullah Br Rd, Al Wurud Dist.
Riyadh 12253, Saudi Arabia

Ataşehir Bulvarı, Gülibrişim Caddesi Evinpark Rezidans, B1/1-2 34758
Ataşehir / İstanbul / TÜRKİYE

info@sanatyapi.com.tr / www.sanatyapi.com.sa

+966 53 410 73 24 / 011 494 14 09